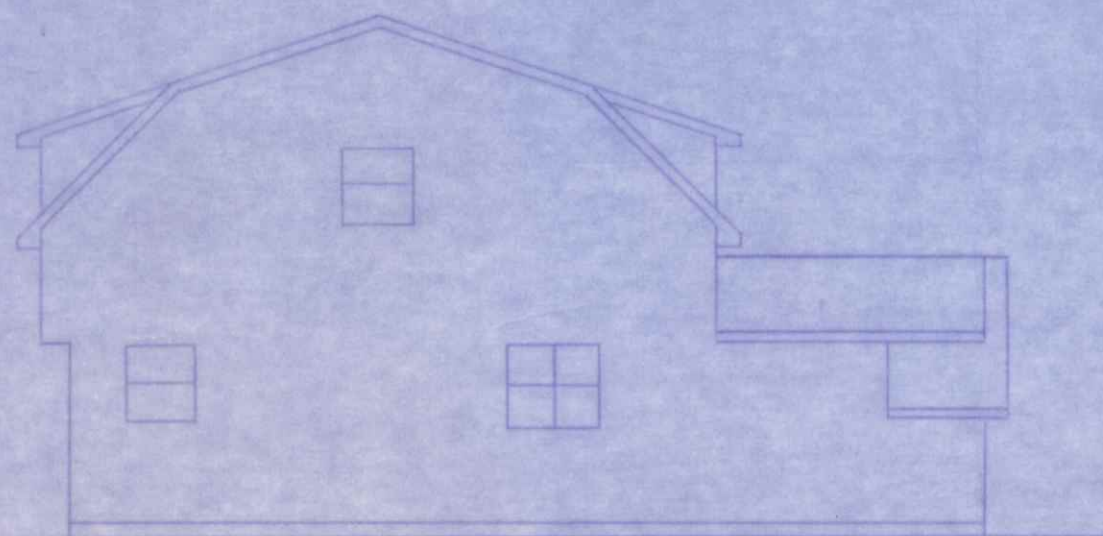
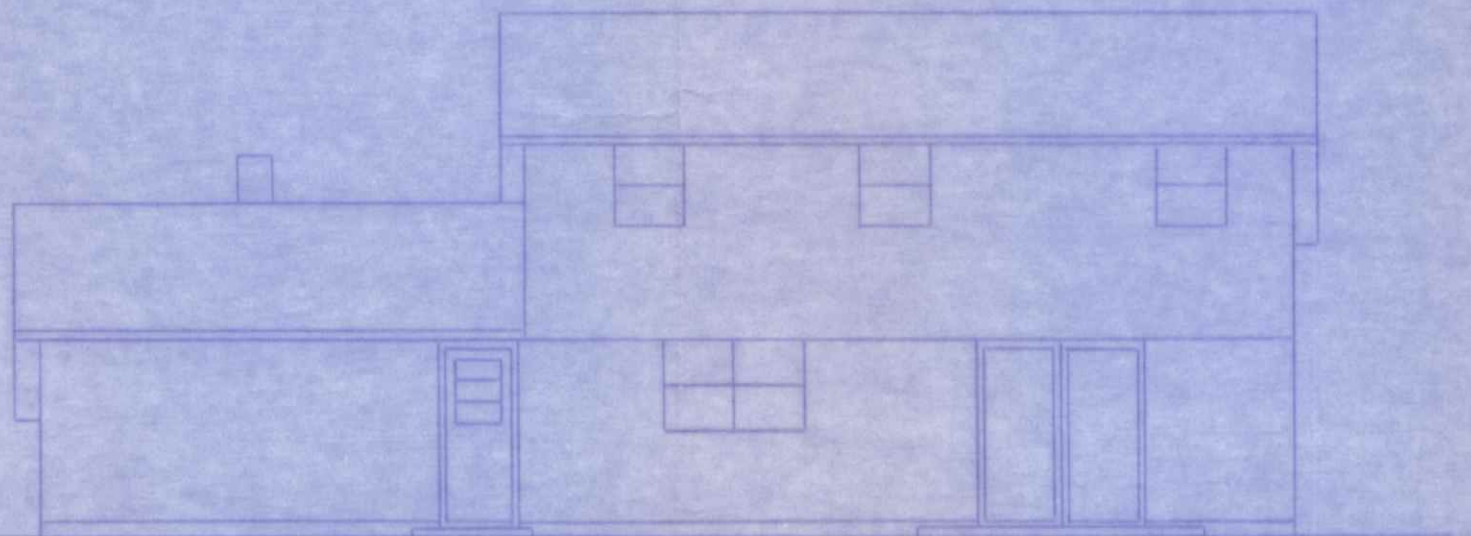




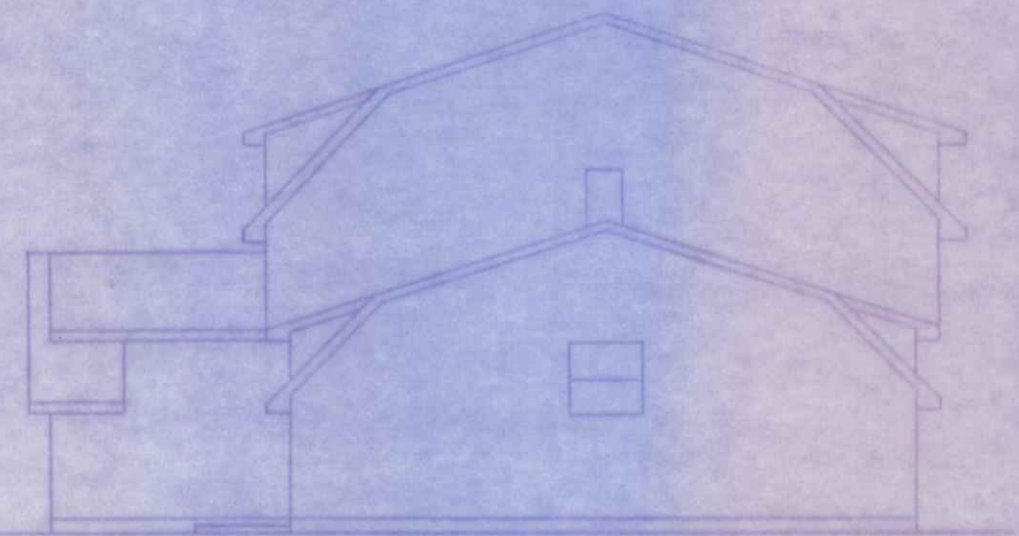
FRONT-ELEV. - 1/4" = 1'-0"



LEFT-END



REAR-ELEV. - 1/8" = 1'-0"

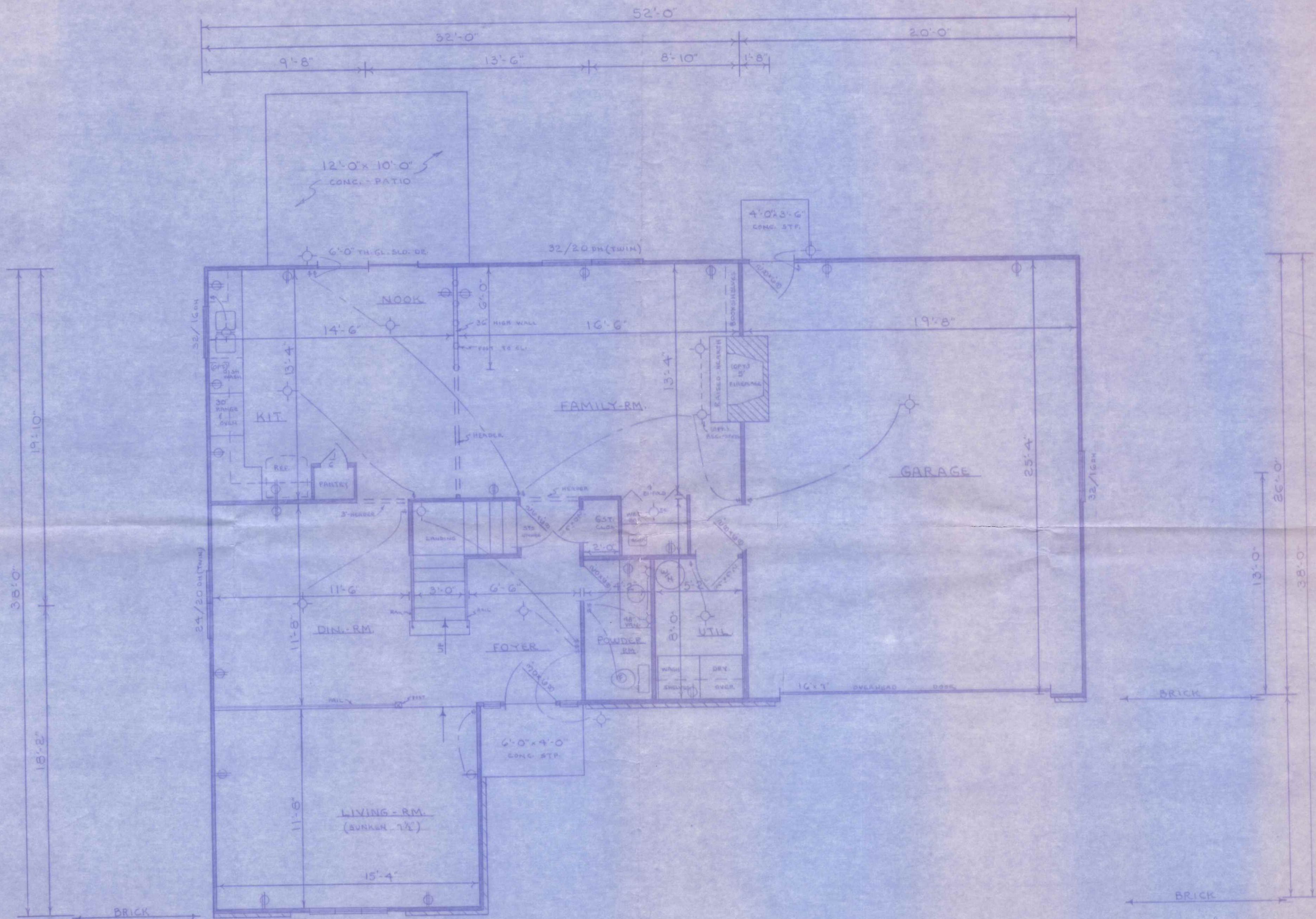


RIGHT-END

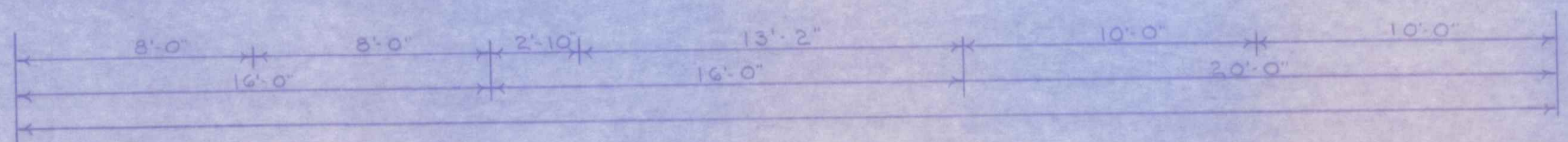
550  
Return  
Dr.

The Gibbs #111	
ELEVATIONS	
STAR-HOMES, INC.	
by	E.L. KOOPER
	4-21-71





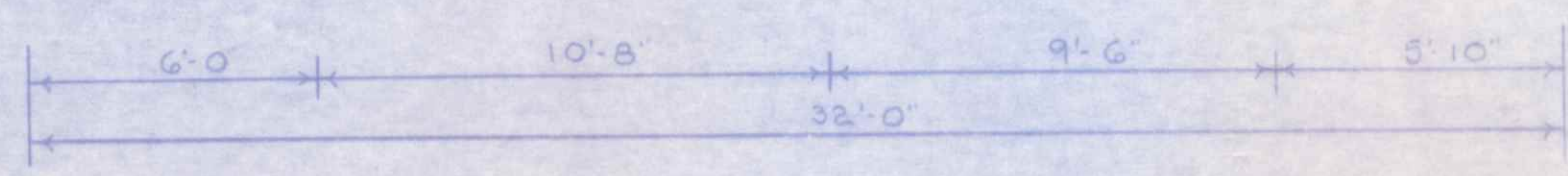
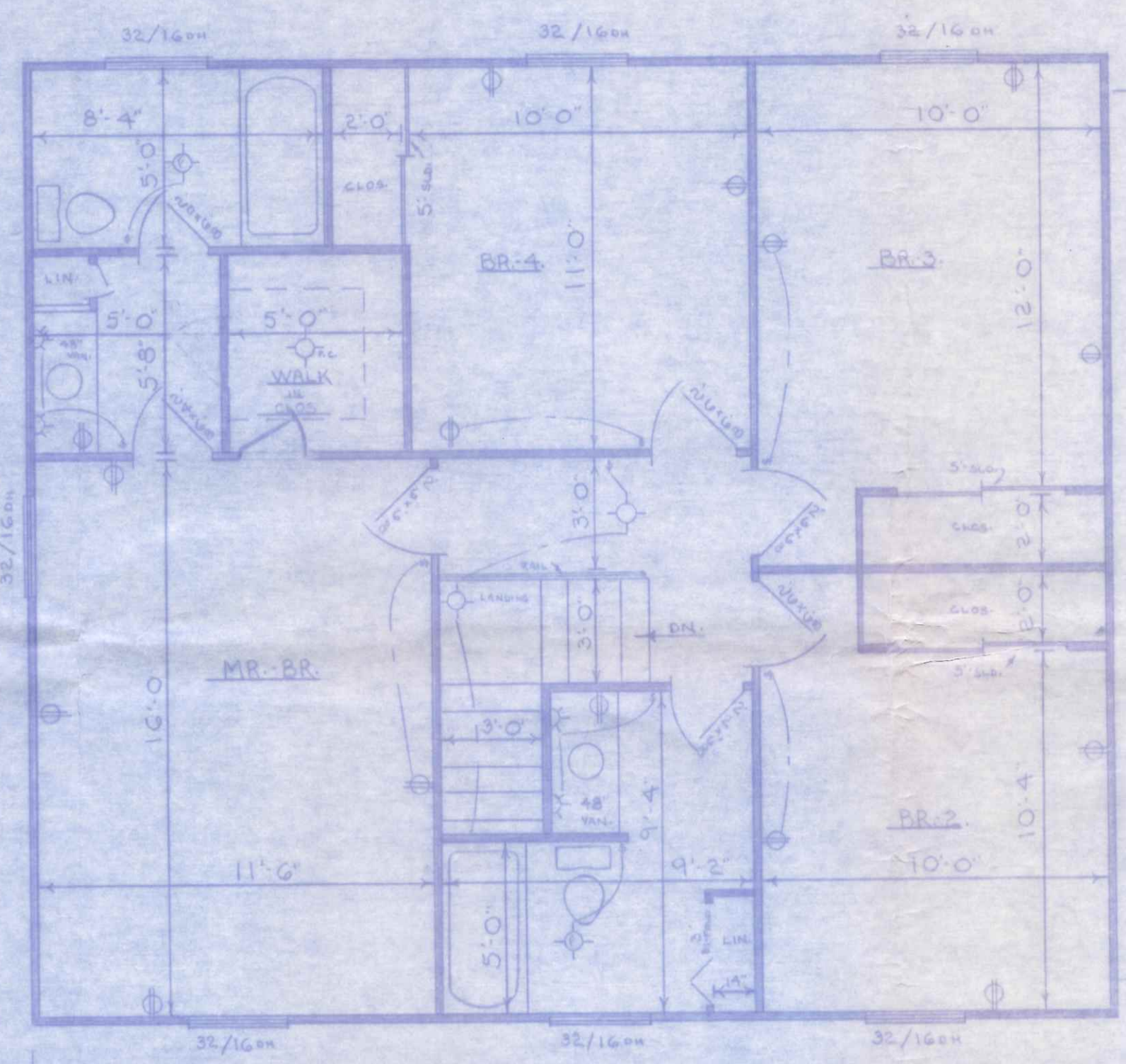
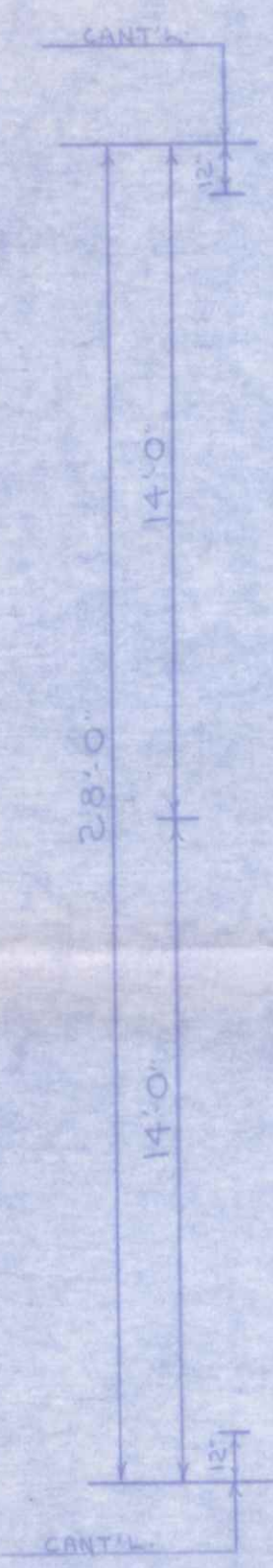
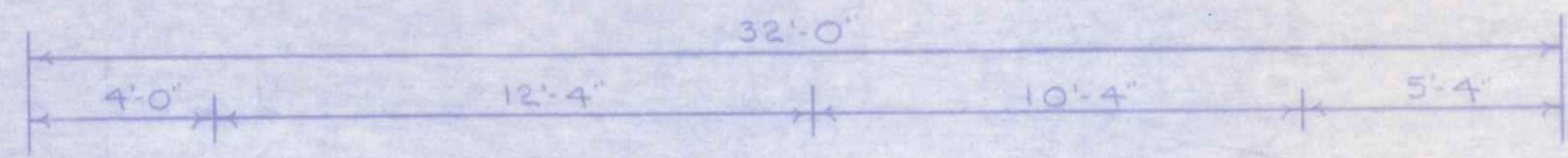
CN-344 T.C.A.



1<sup>st</sup> FL. - 1024  
 2<sup>nd</sup> FL. - 896  
 GAR. - 520  
 TOTAL - 2440 sq. FT.

The Gables	
1 <sup>st</sup> FLOOR - PLAN	
- STAR-HOMES, INC.	
By:	1/4" = 1'-0"
E.L. KOUBER	
4-20-71	





The Gates	
2 <sup>nd</sup> FLOOR PLAN	
STAR HOMES, INC.	
BY E.L. KOSMAN	4/20/71
4-20-71	